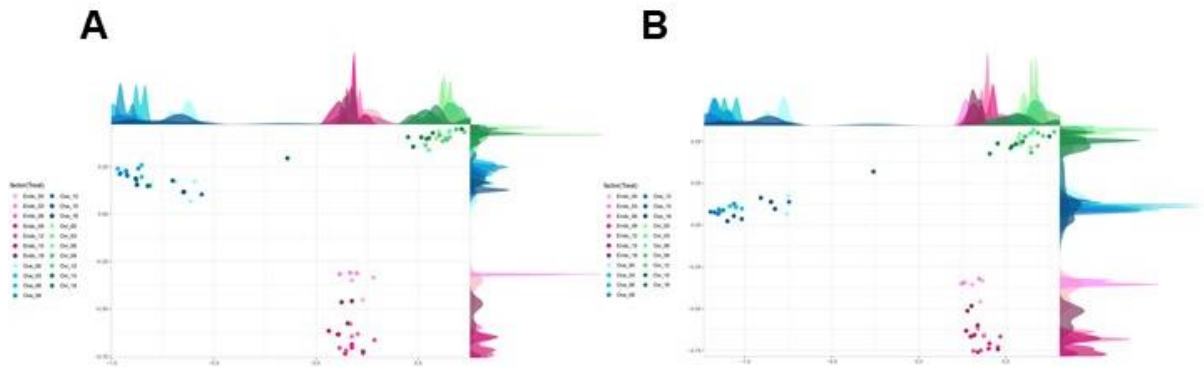


1 **SUPPLEMENTARY FILE LEGENDS**



2

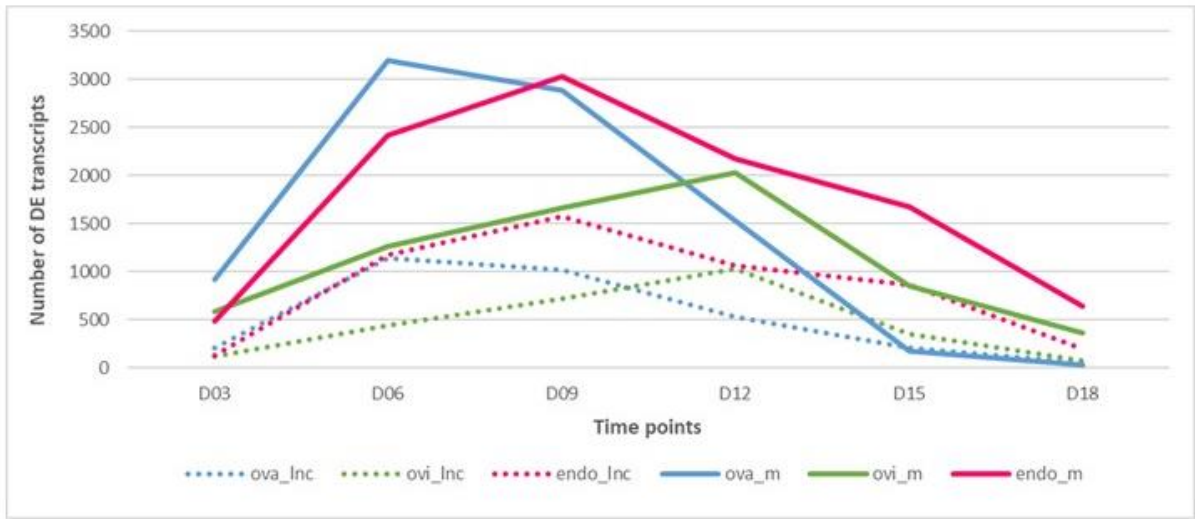
3 **Supplementary Figure S1. Separation of RNA-seq data by tissue and date. (A) Multidimensional scaling**

4 **(MDS) plot of lncRNA (novel lncRNA and known lncRNA) data in three reproductive tissue, (B) of mRNA data**

5 **in three reproductive tissue.**

6

7



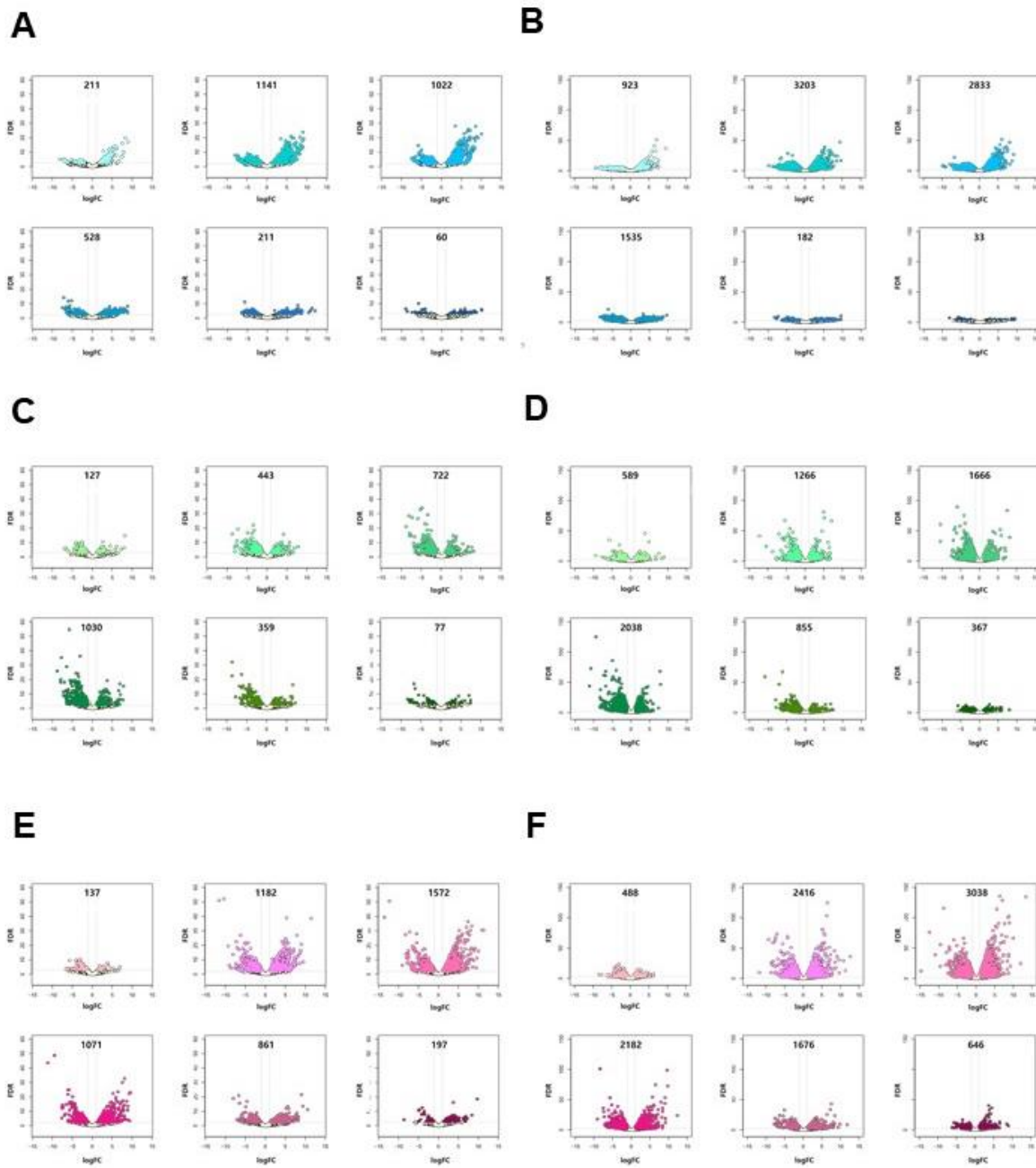
8

9 **Supplementary Figure S2. Dynamic changes of DEGs & DELs of three tissues (ovary, oviduct,**

10 **endometrium).** Comparing the start of estrous cycle (D00) with each time points (D03, D06, D09, D12, D15,

11 D18).

12



13

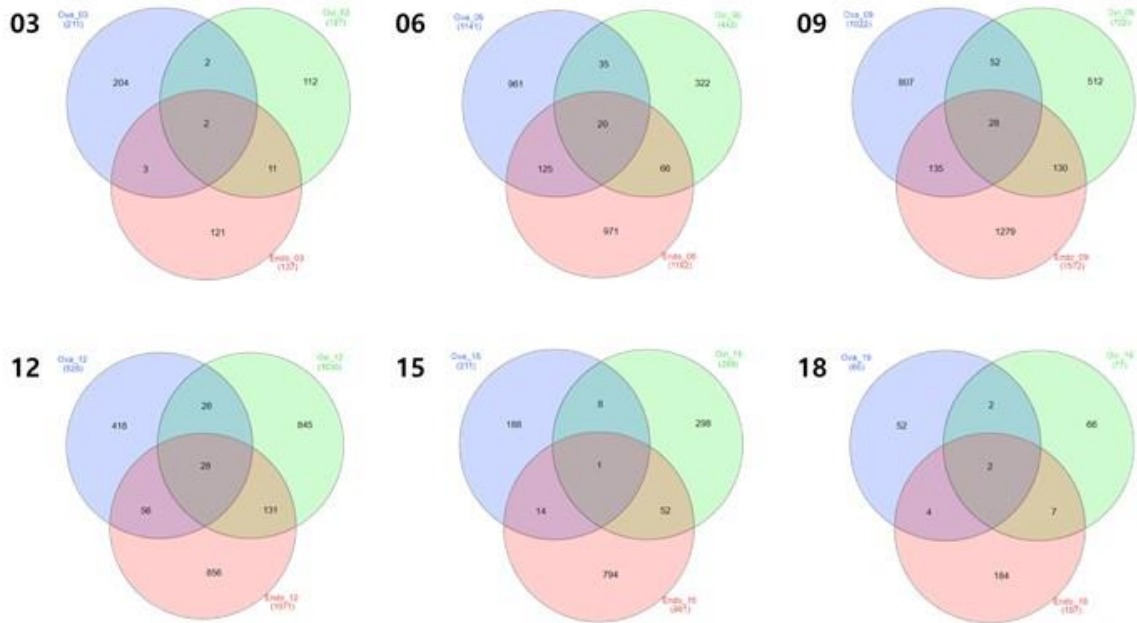
14 **Supplementary Figure S3. Number and pattern of DElncRNA and DEMRNA by tissue and date. (A)**

15 Volcano plot of DElncRNA in ovary, (B) of DEMRNA in ovary, (C) of DElncRNA in oviduct, (D) of DEMRNA

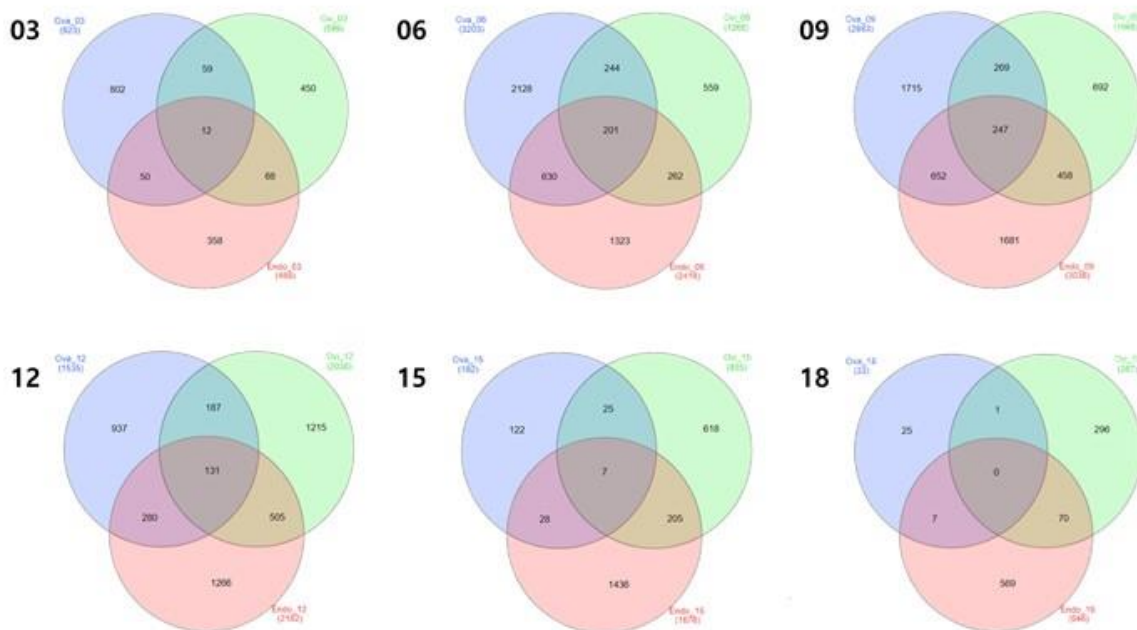
16 in oviduct, (E) of DElncRNA in endometrium, (F) of DEMRNA in endometrium.

17

A



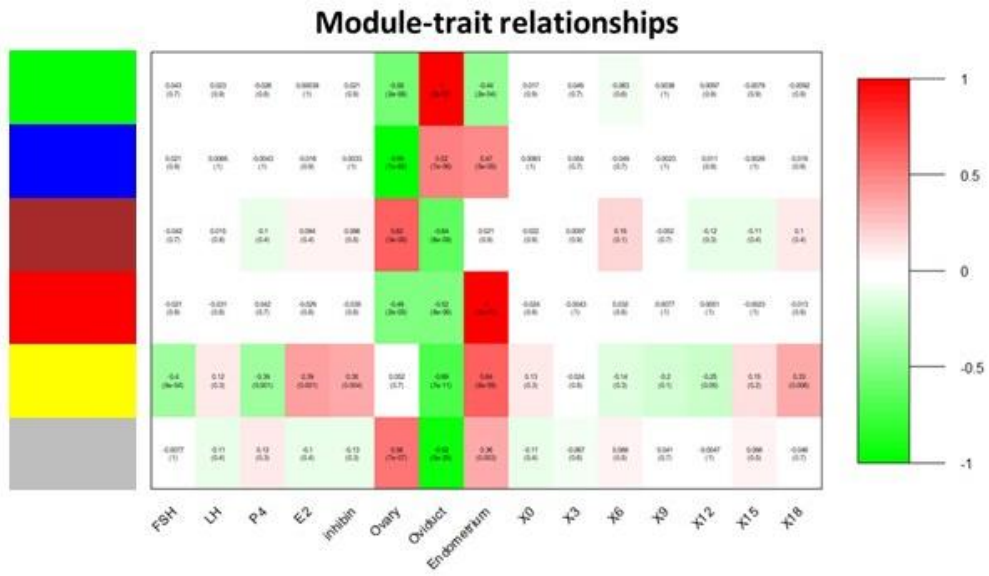
B



18

19 **Supplementary Figure S4. Number of DElncRNA and DEmRNA by tissue and date.** (A) Venn diagram of
 20 DElncRNA in three reproductive tissue by date (D00 vs D03, D06, D09, D12, D15, D18), (B) of DEmRNA in
 21 three reproductive tissue by date (D00 vs D03, D06, D09, D12, D15, D18).

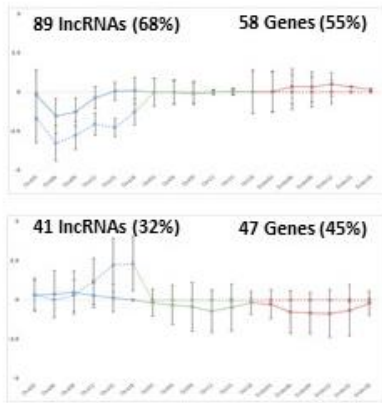
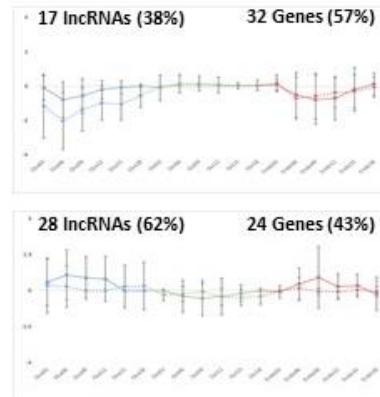
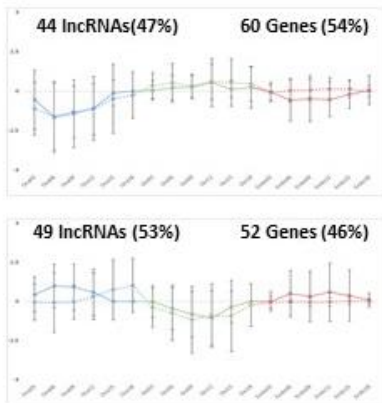
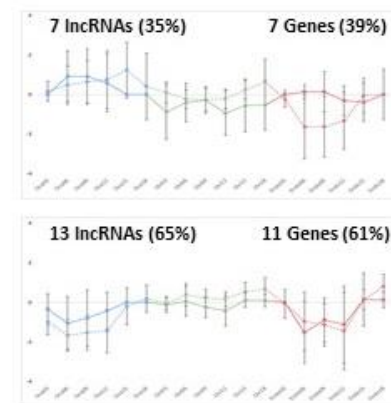
22



23

24 **Supplementary Figure S5. The original module-trait relationships heatmap of lncRNA according to**
 25 **hormones, tissues (ovary, oviduct, endometrium), and days (D00, D03, D06, D09, D12, D15 D18).**

26

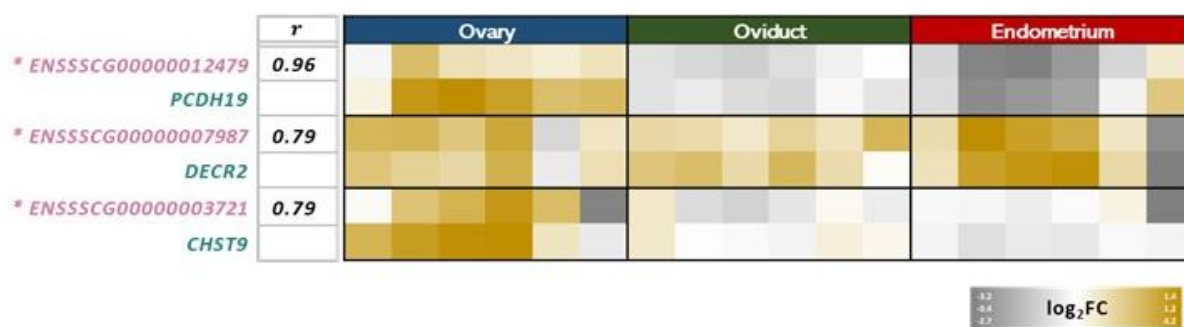
A**B****C****D**

..... ova_lnc ovi_lnc endo_lnc — ova_m — ovi_m — endo_m

27

28 **Supplementary Figure S6. Analysis of lncRNA and DEcis-acting gene clustering of each network by k-**
 29 **means clustering algorithm in multi-experimental viewer software.** Gene clustering analysis showed two
 30 expression patterns in each of the four networks. (A) Gene clusters in the blue network, (B) in the green network,
 31 (C) in the red network, (D) in the yellow network.

32



33

34 **Supplementary Figure S7. Correlation heatmap of the significant lncRNA and cis-acting gene of yellow**

35 **network.** Correlation coefficients (*r*) were calculated as log₂FC values. Log₂FC of D03, D06, D09, D12, D15,

36 and D18 in order from the first column to the last column of each tissue category. LncRNAs marked with an

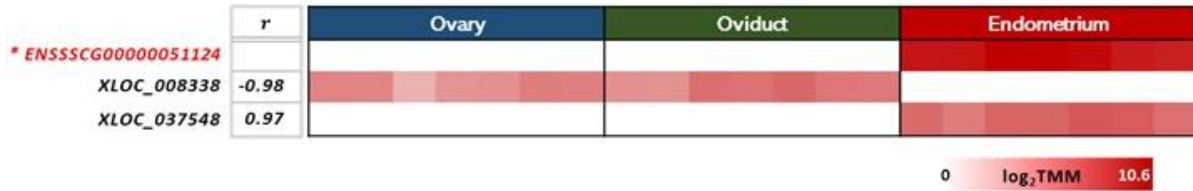
37 asterisk (*) indicate DElncRNAs.

38

A



B



39

40 **Supplementary Figure S8. Correlation heatmap of the core lncRNA and main lncRNA.** Correlation
 41 coefficients (*r*) were calculated as log2TMM values. Log2TMM of D00, D03, D06, D09, D12, D15, and D18 in
 42 order from the first column to the last column of each tissue category. LncRNAs marked with an asterisk (*)
 43 indicate both core lncRNA and main lncRNA. (A) Correlation heatmap of core lncRNA and main lncRNA of
 44 network from the blue, and (B) red modules.

45

46