

Survey of *Dicrocoelium dendriticum* infection in imported Romani and local sheep (*Ovis aries*), and potential epidemiological role in Saudi Arabia

Mutee Murshed*, Saleh Al-Quraishy, Mohammed M Mares, Osama B. Mohammed and Hossam M. A. Aljawdah

Department of Zoology, College of Science, King Saud University, Riyadh 11451, Saudi Arabia



Received: Jun 7, 2022

Revised: Jul 8, 2022

Accepted: Jul 26, 2022

*Corresponding author

Mutee Murshed

Department of Zoology, College of Science, King Saud University, Riyadh 11451, Saudi Arabia.

Tel: +966-4676916

E-mail: mmurshed@ksu.edu.sa

Copyright © 2022 Korean Society of Animal Sciences and Technology. This is an Open Access article distributed under the terms of the Creative Commons Attribution Non-Commercial License (<http://creativecommons.org/licenses/by-nc/4.0/>) which permits unrestricted non-commercial use, distribution, and reproduction in any medium, provided the original work is properly cited.

ORCID

Mutee Murshed

<https://orcid.org/0000-0003-3717-6424>

Saleh Al-Quraishy

<https://orcid.org/0000-0003-4204-3124>

Mohammed M Mares

<https://orcid.org/0000-0002-0662-2113>

Osama B. Mohammed

<https://orcid.org/0000-0001-5457-2555>

Hossam M.A. Aljawdah

<https://orcid.org/0000-0002-3675-1397>

Competing interests

No potential conflict of interest relevant to this article was reported.

Abstract

The epidemiology of parasite infection in local and imported breeds is quite an essential topic in the meat industry and human health. This study aims to determine the prevalence of *Dicrocoelium dendriticum* in local sheep breeds (Naemi, Najdi, and Harri) and imported breeds from Romania (Romani breed) and the epidemiology of the infection in Saudi Arabia. Morphological description, the relationship between dicrocoeliasis and sex, age, and histological changes were also presented. A total of 6845 slaughtered sheep at Riyadh Automated Slaughterhouse were investigated and followed up for 4 months between 2020–2021. It included 4,680 local breeds and 2,165 imported Romanian breeds. Fecal samples and livers and gallbladders from slaughtered animals were examined for apparent pathological lesions. The results indicated that the infection rate in slaughtered animals was 10.6% in imported Romani sheep and 0.9% in the local Naeimi breed. After identifying the parasite morphologically, negative results were obtained from examining feces, gallbladders, and livers of Najdi and Harry sheep breeds. The mean number of eggs per 20 μ L/gallbladder was low (72.78 ± 17.8 ; 76.11 ± 5.07), medium (334.59 ± 90.6 ; 292.91 ± 26.63), and high (1113.2 ± 22.3 ; 1004 ± 143.4) in imported and Naeime sheep, respectively. Significant differences were found between gender and age (males and females were 3.67% and 6.31%; > 2 years 4.39%, 1–2 years 4.22%, and 1 year 3.53%) respectively. Histopathological lesions in the liver were more pronounced. Our survey confirmed the presence of *D. dendriticum* in imported Romani and local Naeimi sheep, and the potential role of imported sheep in the epidemiology of dicrocoeliasis in Saudi Arabia.

Keywords: *Dicrocoelium dendriticum*, Prevalence, Liver, Gall bladder, Saudi Arabia

INTRODUCTION

Dicrocoeliasis is a common disease known as lancet fluke or small liver fluke that affects sheep, goats, cattle, buffaloes, roe-deer, camels, and humans. This parasite resides in the bile ducts and gallbladders

Funding sources

This work was supported by the Researchers Supporting Project (RSP-2021/3), King Saud University (Riyadh, Saudi Arabia).

Acknowledgements

Not applicable.

Availability of data and material

Upon reasonable request, the datasets of this study can be available from the corresponding author.

Authors' contributions

Conceptualization: Murshed M.
Data curation: Murshed M.
Methodology: Mares MM.
Software: Al-Quraishy S.
Validation: Al-Quraishy S.
Investigation: Aljawdah HMA.
Writing - original draft: Murshed M, Mares MM, Mohammed OB.
Writing - review & editing: Murshed M, Al-Quraishy S, Mares MM, Mohammed OB, Aljawdah HMA.

Ethics approval and consent to participate

This article does not require IRB/IACUC approval because there was the help of veterinarians working at the slaughterhouse in terms of preparing samples.

of domestic and wild ruminants, including sheep [1–3]. Also, it has been reported to affect rabbits, pigs, dogs, horses, and people [4]. Dicrocoeliasis is spreading in sheep herds due to the growth of dry, scrub-like environments [5,6].

Dicrocoelium dendriticum has worldwide distribution and is thought to be endemic, possibly in 30 different countries. So, in 2007, the World Health Organization added *D. dendriticum* to the list of species that should be targeted by its Foodborne Disease Burden Epidemiology Reference Group. *D. dendriticum* can be found in Europe (ex-USSR, Switzerland, Italy, Germany, Spain, Turkey), the Middle East (Iran), Asia (China, Japan, Vietnam, and the Indo-Malayan region), Africa (Ghana, Nigeria, Sierra Leone), North and South America, and Australia. The parasite thrives in settings that suit intermediate hosts, such as dry, chalky, or alkaline soils [1,7,8]. Furthermore, a study on the prevalence of *D. dendriticum* was conducted in Sweden. It was discovered that grazing land near forest regions (which is beneficial to mollusks) and arid pastures with little other biodiversity (which is beneficial to ants) both increased parasite prevalence [9].

In Saudi Arabia, *D. dendriticum* has been reported in Al-Madinah by [10] and the assessment was done in Taif Province slaughterhouses to compare local to imported sheep [6]. Harri, Najdi, and Naemi (Awassi) are the main sheep breeds in Saudi Arabia that have good adaptability to environmental conditions, resistance to parasitic diseases, and satisfy the needs of Saudi consumers; the natives much prefer them over other sheep breeds [11,12]. In recent years, the number of animals in Saudi Arabia has increased. However, it is still insufficient to meet the growing demand for meat due to socio-economic development.

Saudi Arabia covers the gap between supply and demand by importing live animals from different countries. The most important is the Romanian sheep [13], imported from Romania, the third-largest breeder of sheep after the United Kingdom and Spain, and the largest exporter. Romania has two indigenous, autochthonous breeds: the Turcana (sometimes known as “Romanian”) and the Tsigai. Both animals adapt well to the Romanian climate, but Turcana may be more suited to the mountain pasture. The medium-wool Tsigai breed, which makes up 24.3% of all sheep in Romania, produces good milk and meat. A long, coarse-wool breed called Turcana (52.4%) produces decent milk but not great meat [14]. Generally observed that infection with *D. dendriticum* is asymptomatic, even in severe infections, and that major losses are due to liver condemnation during meat inspection [15].

It is widely acknowledged that parasitic infections of sheep result in a massive economic loss for the livestock industry and agricultural communities due to the death of infected animals, weight loss, decreased milk production, and condemnation of organs unsuitable for human consumption [16,17]. Pathological changes associated with dicrocoeliasis include pallor, hardened liver, distension, and inflammation of bile ducts. The presence of parasites in the gallbladder and bile ducts may also result in whitish foci on the liver, scarring, fibrosis, and cirrhosis, depending on the severity of the infection [18,19]. The study aimed to investigate the prevalence of *D. dendriticum* in three types of local sheep breeds (Naemi, Najdi, and Harri) and imported breed (Romani breed) and to investigate the epidemiology of the infection in Saudi Arabia. This research on *D. dendriticum* in a local sheep breed attempts to improve the Kingdom of Saudi Arabia's prevention of a future outbreak.

MATERIAL AND METHODS

Study and animals

A survey was conducted in the Riyadh slaughterhouse from 2/11/ 2020 to 3/2/ 2021. The number of infected and uninfected samples was determined for each month (November 2020 to February 2021). Samples investigated included 6,845 sheep: 2,165 from imported Romani sheep and 4,680

from local sheep, including 3,509 Naemi (*arwassi*), 424 Najdi, and 747 Harri. Samples were taken from each animal infected with the parasite, and an investigative report form was filled out (origin of the animal, sex, and age), by the veterinarian in charge of meat inspection. All sheep samples were categorized into three age groups: < 1 year, 1-2 years, and >2 years. All sheep were examined for the presence of *D. dendriticum* in the liver with the help of veterinarians working at the slaughterhouse to prepare samples.

Initial examination

All livers from slaughtered sheep were inspected visually and by palpation and were incised using a scalpel blade. The number of infected sheep and the total number of sheep slaughtered were recorded. All the sheep coming to the slaughterhouses from the city of Riyadh and the surrounding areas were of local breeds. The imported Romani sheep of different ages were determined from the morphological features.

Collection of samples and diagnostic methods

A total of 269 samples were collected from the infected sheep (236 of imported sheep and 36 of local sheep), including fecal samples, gallbladders, and livers, and transported to the laboratory.

Fecal samples analysis (coprological investigation)

During evisceration of the carcass, 15g of feces were collected directly from the rectum, placed in a plastic bag, and stored at 4°C until analyzed. The sedimentation technique using the Dinnik and Dinnik sedimentation method [20], and the flotation technique based on the Teuscher method [21], were used for coprological studies [4].

Helminth parasite morphological analysis

A drop of the precipitate was placed on a sliding glass and examined under 40X magnification with an optical microscope (BX51TF, OLYMPUS, Tokyo, Japan) to search for *D. dendriticum* and all its stages to evaluate the mobility and morphology of the *D. dendriticum* [22,23].

Liver and gallbladder inspection at the slaughterhouse

Bile was collected by puncturing the gallbladder with a 5-cc syringe 20 gauge. The bile thus collected was stored at +4°C until it was analyzed. The bile contained in the syringes was transferred into conical tubes. The tubes containing 10–25mL of bile were centrifuged at 2,500 g for 10 minutes. A volume of 20µL of the biliary pellet was sucked up with a micropipette, placed on a microscopic slide, and covered with a coverslip. The sample was examined under an optical microscope to determine the presence and count of *D. dendriticum* eggs.

The adult worm and eggs were isolated from the liver and gallbladder. The worms collected were morphologically identified following the keys and description outlined in [24,25]. The anatomopathological examinations for the infected livers were performed according to [26]. The liver is categorized as aChol+dist+=Distomian cholangitis (inflammation of the bile ducts with the presence of the parasite), bChol+dist-=Non-distomian cholangitis [27].

Histopathology

The liver samples were fixed in 10% formalin for histopathological examinations. Their paraffin embedding was done in 10 × 5 × 3 mm tissue blocks, followed by section cutting with a rotary microtome at 5 µm thickness. Hematoxylin and eosin dye was used to stain the prepared sections. The sections were examined with a conventional microscope (DM IL LED, Leica, Wetzlar,

Germany), and photographs were taken with a camera attached to them at a magnification of 400 X. (Leica) [28].

Statistics analysis

The data analysis was carried out by one-way ANOVA with Tukey's post hoc assuming p -value ≤ 0.05 as statistically significant with the help of the SPSS software. The experimental data are expressed as the mean \pm SEM.

RESULTS

Prevalence rates

The present study's overall prevalence of *D. dendriticum* was 11.5%, with 10.6% in the Romani imported breed and 0.9% in the local Naemi sheep. The other two local breeds (Harry and Najdi) were negative for infection with *D. dendriticum* (Table 1). The highest prevalence in the Romanian sheep was reported in the first month of the survey in November 2020, reaching 13%, and the lowest, 9.36%, in the fourth month of January 2021. In the Naemi breed, the highest prevalence was reported in the second month of December 2020, reaching 1.1%, and the lowest rate, 0.8%, in the fourth month of February 2021.

Flukes characterization

The lancet liver fluke is a flat, translucent parasite with a spindly shape with similar oral and ventral suckers. The ventral sucker is located in the worm's anterior third, the intestine is at the caudal end, and the testes are visible in the fluke's anterior third. They are located caudal to the ventral sucker, between the caeca branches. The ovary is close to and caudal to the midline. The genital pore is situated just in front of the ventral sucker. The vitellar glands are visible at the lateral borders, posterior to the testes (Fig. 1). The parasite eggs are round in shape and dark brown. A coprology study demonstrated the general frequency of eggs in feces in infected sheep was 3.45% (Fig. 2).

Feces egg counts

Fecal samples from infected and non-infected sheep demonstrated a significant difference ($p \leq 0.05$) in the presence and absence of eggs in *D. dendriticum*, reaching 96.07% and 3.45%, respectively, as shown in (Table 2).

Gallbladder eggs count

The gallbladder egg count ranged from 50 to 1,800 eggs in both local and imported sheep. The average number of eggs was low (72.78 17.8: 76.11 5.07), middle (334.59 90.6: 292.91 26.63),

Table 1. The prevalence of *Dicrocoelium dendriticum* infection in the breeds Naemi, Najdi, Harri, and Romani

Months	Imported sheep			Local sheep						
	Romani			Naimi			Hurri		Najdi	
	Uninfected	Infected	%	Uninfected	Infected	%	Uninfected	%	Uninfected	%
1	406	61	13.1	824	8	0.96	163	0	104	0
2	476	58	10.86	926	10	1.1	191	0	65	0
3	563	67	10.63	745	8	1.1	178	0	141	0
4	484	50	9.36	981	7	0.71	115	0	114	0
Total	1,929	236	10.6	3,476	33	0.9	747	0	424	0

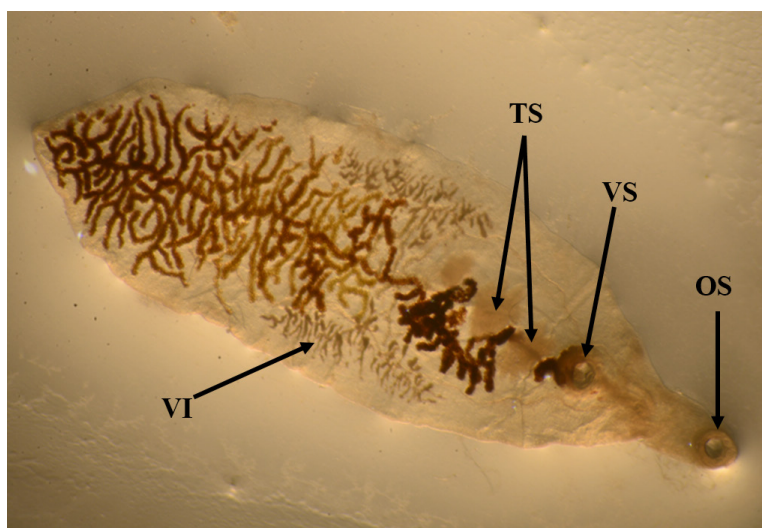


Fig. 1. *Dicrocoelium dendriticum*: adult. OS, oral sucker; VS, ventral sucker; VI, vitellarium; Ts, testis.

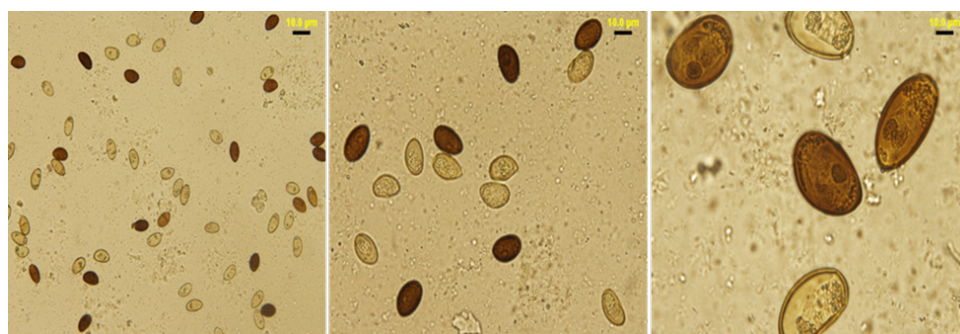


Fig. 2. Numerous eggs of *Dicrocoelium dendriticum* in stools and bile were observed under an optical microscope. The eggs are ellipsoid asymmetrical and dark brown. Scale bar =10 µm.

Table 2. Gallbladder egg count in *Dicrocoelium dendriticum* infected sheep (imported and local)

Status of infection	Infected sheep (imported)		Infected sheep (local)		Total %	
	Infected	%	Infected	%	Infected	%
Feces analysis						
+c	1,929	89.91	4,647	99.29	6,576	96.55
-d	236	10.90	33	0.71	269	3.45
Liver inspection						
aChol+dist+	55	2.54	5	0.11	60	0.88
bChol+dist-	181	8.36	8	0.17	189	2.76
Healthy	1,929	89.10	4,647	99.29	6,576	96.07

aChol+dist+, distomian cholangitis (inflammation of the bile ducts with the presence of the parasite); bChol+dist-, non-distomian cholangitis.

and high (1113.2 22.3: 1004 143.4). Local and imported sheep had the same proportion of low, medium, and high diseased animals. The rate of low infection in local sheep is much higher than the rate of medium and heavy infection, but the rate of low infection in Roman sheep was higher than that of medium and heavy infection (Table 3). Light (100 worms), moderate (100–499

Table 3. Examination of egg count and hepatic inflection in imported and local sheep

Worm load	Infected sheep (imported)			Infected sheep (local)		
	Infected	%	E /20 μ L.gb (M \pm SD)	Infected	%	E /20 μ L.gb (M \pm SD)
Low (< 100)	74	31.4	72.78 \pm 17.8	7	21	76.11 \pm 5.07
Moderate (100–499)	111	47	334.59 \pm 90.6	11	33	292.91 \pm 26.63
Heavy (500–2,000)	51	21.6	1,113.2 \pm 22.3	15	45	1,004 \pm 143.4

worms), and high infections were identified (500–2,000 worms). The severity of the lesions varied with worm load. A significant number of eggs in the gallbladder indicates the presence of a large number of worms in the bile ducts, causing thickening of the duct walls, liver swelling and cirrhosis, and the appearance of whitish spots on the liver surface (Fig. 3).

Gross examination of the liver

Liver inspection revealed inflammation in 2.76% of bile ducts harboring the parasite, while 0.88% of parasite-free ducts were not inflamed.

The effects of age and gender

The survey results revealed a significant difference between *D. dendriticum* positivity and age class ($p \leq 0.05$), > 2 years 4.39%, 1–2 years 4.22%, and 1 year 3.53%. There is a significant difference according to the animal's gender for *D. dendriticum* ($p \leq 0.05$). The prevalence in males and females was 3.67% and 6.31%, respectively (Table 4).

Hepatic histopathological alteration

The histology of all sheep livers infected with *D. dendriticum* was studied. The livers were indurated, scarred, and lumpy on the surface. In some areas accolated, the bile ducts were thickened and dilated. There were no migrating lesions in the parenchyma of the liver. However, the glandular structures of the main ducts showed considerable growth, bile duct damage, and hyperplasia.

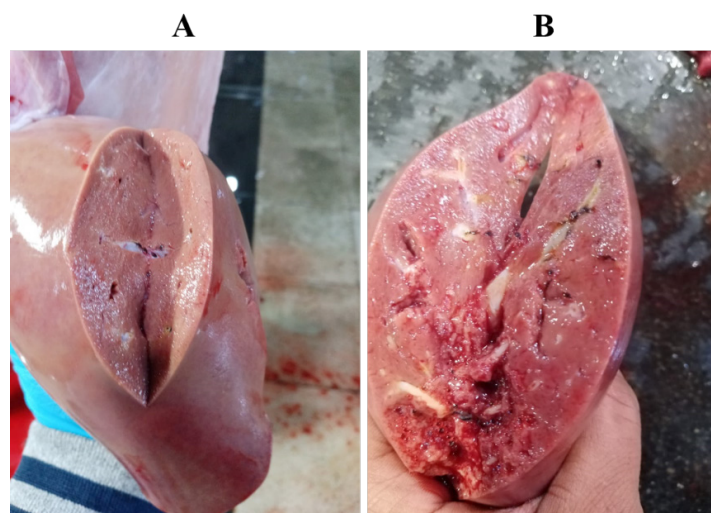


Fig. 3. (A) liver non-infected by *Dicrocoelium dendriticum*; (B) liver infected by the presence of a large number of worms in bile ducts, leading to thickening of the walls of these ducts, swelling and cirrhosis of the liver, and the appearance of whitish spots on the liver surface.

Table 4. Effect of age and sex on *Dicrocoelium dendriticum* infection in surveyed sheep

Sheep age	Uninfected sheep	Infested sheep	%
> 2 years	2,026	89	4.39
1–2 years	2,795	118	4.22
< 1 year	1,755	62	3.53
Sex			
Male	5,530	203	3.67
Female	1,046	66	6.31

Lymphocytes, plasma cells, macrophages, and eosinophils were abundant in the portal areas and on the duct walls. There was a significant papillary proliferation of the mucosa in smaller ducts with a very chronic phase of infestation, and the lumen was occasionally partially occluded by these papillae. Cholangitis was detected as a result of subsequent bacterial infection. The physical appearance of the disease in its last stages resembles portal cirrhosis, with fibrosis damaging liver cells (Fig. 4).

DISCUSSION

The current survey provides an update on the epidemiology of sheep dicrocoeliasis in Saudi Arabia. *D. dendriticum* was reported in sheep slaughtered in Riyadh. The prevalence was found to be (10.6%) in imported Romani sheep, and 0.91% in local Naemi. Najdi and Al Hari local breeds were not infected with this parasite. This report on *D. dendriticum* from a local sheep breed aims to enhance the prevention of the potential epidemic in the Kingdom of Saudi Arabia. It is not surprising that the trematode was detected in imported Romani sheep. As *D. dendriticum* is endemic to Romania [5].

These findings are consistent with previous research on dicrocoeliasis prevalence in cattle, sheep, and goats, where 1.47%, 1.76%, and 2.10% were reported respectively [29]. This may suggest that *D. dendriticum* became established among local sheep in Saudi Arabia due to extensive sheep importation. Typically, imported animals are not immediately slaughtered but kept for a while in feedlots or grazing grounds alongside indigenous breeds. According to Albogami et al., the

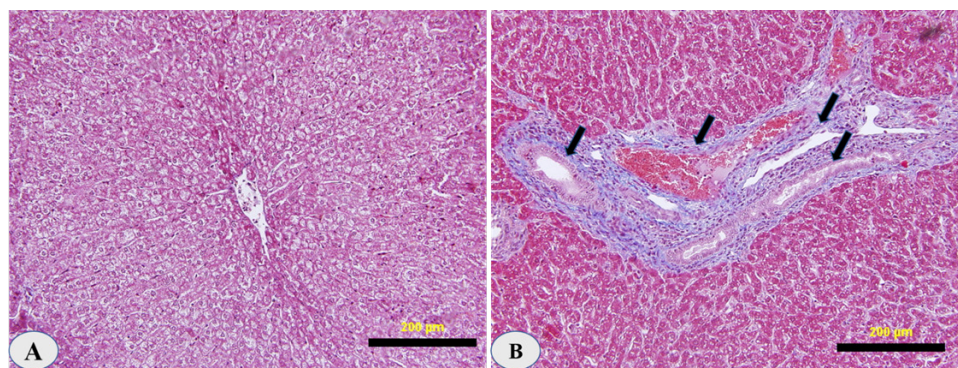


Fig. 4. Hematoxylin–eosin-stained pathohistological changes of the liver upon *Dicrocoelium dendriticum* infection. (A) A non-infected liver showing the healthy integrity of hepatic tissue construction. (B) An infected liver showing severe fibrosis around the bile ducts (arrows) and mild leukocyte infiltration (magnification 20×). Scale bar = 20 μm.

number of injuries observed in imported sheep was 0.99, accounting for 0.46% of the total number of animals examined [6]. In contrast, no record of any injury was found in Taif Province's local sheep. Soliman and Taha reported *D. dendriticum* in 0.6% of slaughtered sheep in Al-Madinah [10]. Gawish et al. found *D. dendriticum* in slaughtered sheep in the Al-Riyadh abattoir [30]. The infection was in Naemi sheep, which is consistent with Maraqa et al, who found out in Jordan that local sheep were not infected with *D. dendriticum* while imported sheep from Romania were infected with the parasite at a rate of 57.5% [31].

In this study, it was found that the gallbladders contained large numbers of eggs. Reflecting large numbers of worms inside the bile ducts with the presence of lesions on the livers, these include swollen livers, thickened bile ducts, and whitish spots on the liver surface. This is consistent with the findings of [19] who associated the severity of liver lesions with worm loads. Furthermore, the egg count in the gallbladder and feces was linked to lesions in the livers and the severity of infection, and it was classified into mild, moderate, and severe. That agreed with [32] who found comparable results in a study on calves naturally infected with *F. hepatica* in terms of the link between the eggs per gram of feces (EPG), bile duct hyperplasia, and fibrosis. Given the significant link between the ductal response and liver fibrosis, this positive connection is not surprising. Although macrophage release of pro-fibrotic and anti-inflammatory mediators is a significant fibrogenesis component, cholangiocyte proliferative inhibition is also crucial.

The findings also revealed a significant link between dicrocoeliasis and animal age. On the other hand, the results revealed a significant association between dicrocoeliasis and animal gender; the males tested positive, indicating that females are much more susceptible to this infection. This could be owing to their longer longevity than males, which exposes them to more stress and disease development, as well as their physiology (gestation and lactation), which reduces their immunity and makes them more susceptible to parasite infections. The findings are similar to those of [33], who found that females have a higher incidence of gastrointestinal helminths than males [33–35].

In this context, previous studies conducted on rodents' livers showed a self-proliferation of cholangiocytes following bile duct ligation, suggesting a specific correlation between bile duct damage and hyperplasia [36,37]. Severe bile duct damage can also cause hepatocytes to transdifferentiate into cholangiocytes, resulting in ductal Cholangitis [37,40]. Similar results were obtained regarding the correlation between the EPG, parasite burden, bile duct hyperplasia, and fibrosis in a study conducted on cattle naturally infected by *F. hepatica* [32]. This positive correlation is considered a safe, strong relationship between the ductal reaction and fibrosis in the liver. Indeed, the secretion of pro-fibrotic and anti-inflammatory mediators by macrophages is regarded as a critical factor in fibrogenesis; concomitant cholangiocyte inhibition reduces fibroblastic proliferation and fibrosis in the liver [37,39].

Pathological changes in the liver (cholangiohepatitis) and gallbladder (cholecystitis) are caused by the action of toxic products formed by the parasite and also the mechanical irritation of the walls of the bile ducts by the fluke. Due to its buccal stylets, *D. dendriticum* irritates the bile duct surface, causing changes in the septal bile ducts [40,41]. Also, the adult parasites cause damage to the lining of the bile ducts. In experimental dicrocoeliasis in sheep, lesions mainly affecting the biliary system and hepatocytes were associated with the parasite burden [42,43]. In this study, the lumen of these bile ducts frequently contained some worms, and the parasite sucker had a superficial erosive effect on the epithelial lining cells [40,42]. Leukocytic infiltration and periductal fibrosis were also observed. Similar histopathological findings were detected in the hepatic and cystic ducts. Their simple columnar epithelium was densely packed with goblet cells, and the mucous glands in the lamina propria were extremely hyperplastic [42,44].

Finally, parasitic burden, bile duct hyperplasia, and fibrosis were found to be negatively correlated

with the degree of leukocyte infiltration, because *D. dendriticum* is a parasite that completes its life cycle in the bile ducts, the link between gallbladder hyperplasia and parasitic burden may be explained as a mechanical parasite irritation caused by the adult flukes' suckers [34,35]. These findings could point to a critical role in parasite-related fibrotic mechanisms. Lowering parasite antigens' interaction with the immune system and modulating the inflammatory response. Furthermore, as previously reported in other parasites, it is possible to suppose a role for the parasite itself in modulating the host immune responses [45]. However, further study is needed to confirm this hypothesis.

CONCLUSION

In conclusion, data of this study indicate that *D. dendriticum* is prevalent in both imported and local (Naemi), *Ovis aries* awassi sheep breeds in Saudi Arabia, may affected important meat source. Consequently, these data could be useful in improving the control measures and therapeutic protocols for the management of infected sheep. Moreover, more studies on this useful will allow us to learn more about the host–parasite interaction mechanisms as well as the complex response to parasitic infections.

REFERENCES

- Otranto D, Traversa D. Dicrocoeliosis of ruminants: a little known fluke disease. *Trends Parasitol.* 2003;19:12-5. [https://doi.org/10.1016/S1471-4922\(02\)00009-0](https://doi.org/10.1016/S1471-4922(02)00009-0)
- Schweiger F, Kuhn M. Dicrocoelium dendriticum infection in a patient with Crohn's disease. *Can J Gastroenterol.* 2008;22:571-3. <https://doi.org/10.1155/2008/912791>
- El-Shafie AM, Fouad MA, Khalil MF, Morsy TA. Zoonotic dicrocoeliasis dendriticum in a farmer's family at Giza governorate, Egypt. *Egypt Soc Parasitol.* 2011;41:327-36.
- Helmy MMF, Al-Mathal EM. Human infection with *Dicrocoelium dendriticum* in Riyadh district (Saudi Arabia). *J Egypt Soc Parasitol.* 2003;33:139-44.
- Otranto D, Traversa D. A review of dicrocoeliosis of ruminants including recent advances in the diagnosis and treatment. *Vet Parasitol.* 2002;107:317-35. [https://doi.org/10.1016/S0304-4017\(02\)00121-8](https://doi.org/10.1016/S0304-4017(02)00121-8)
- Albogami BM, Kelany AHM, Abu-Zinadah OA. Prevalence of *Dicrocoelium dendriticum* infection in sheep at Taif province, west Saudi Arabia. *J Egypt Soc Parasitol.* 2015;45:435-42. <https://doi.org/10.12816/0017595>
- Wang CR, Qiu JH, Zhu XQ, Han XH, Ni HB, Zhao JP, et al. Survey of helminths in adult sheep in Heilongjiang province, People's Republic of China. *Vet Parasitol.* 2006;140:378-82. <https://doi.org/10.1016/j.vetpar.2006.04.008>
- Arbabi M, Dalimi A, Ghafarifar F, Moghadam MF. Prevalence and intensity of *Dicrocoelium dendriticum* in sheep and goats of Iran. *Res J Parasitol.* 2011;6:160-7. <https://doi.org/10.3923/jp.2011.160.167>
- Ekstam B, Johansson B, Dinnétz P, Ellström P. Predicting risk habitats for the transmission of the small liver fluke, *Dicrocoelium dendriticum* to grazing ruminants. *Geospat Health.* 2011;6:125. <https://doi.org/10.4081/gh.2011.164>
- Soliman MI, Taha HA. Prevalence of three liver parasites in sheep and goats in Al-Madinah Al-Munawwarah, Saudi Arabia Kingdom. *J Egypt Soc Parasitol.* 2012;42:475-82. <https://doi.org/10.12816/0006333>
- Suliman GM, Al-Owaimer AN, El-Waziry AM, Hussein EOS, Abuelfatah K, Swelum

- AA. A comparative study of sheep breeds: fattening performance, carcass characteristics, meat chemical composition and quality attributes. *Front Vet Sci.* 2021;8:647192. <https://doi.org/10.3389/fvets.2021.647192>
12. Aljumaah RS, Al-Shaikh MA, Kibogo H, Kwallah A, Jianlin H, Hanotte O, et al. Genetic relationships among four Saudi Arabian sheep populations. *Iran J Appl Anim Sci.* 2014;4:775-9.
 13. Ghandour AM, Tahirandi MO, Shalaby IM. A comparative study of the prevalence of some parasites in animals slaughtered in Jeddah abattoir. *J King Abdulaziz Univ Sci.* 1989;1:87-94. <https://doi.org/10.4197/Sci.1-1.8>
 14. Raducuta I, Ghita E. Research regarding the situation of sheep size exploitations and sheep breed structure in Romania [Internet]. 2009 [cited 2022 May 13]. https://meetings.eaap.org/wp-content/uploads/2022/01/2009_Barcelona_EAAP_Book_Abstracts.pdf
 15. Theodoridis Y, Duncan JL, MacLean JM, Himonas CA. Pathophysiological studies on *Dicrocoelium dendriticum* infection in sheep. *Vet Parasitol.* 1991;39:61-6. [https://doi.org/10.1016/0304-4017\(91\)90062-Z](https://doi.org/10.1016/0304-4017(91)90062-Z)
 16. Suarez VH, Busetti MR. The epidemiology of helminth infections of growing sheep in Argentina's Western Pampas. *Int J Parasitol.* 1995;25:489-94. [https://doi.org/10.1016/0020-7519\(94\)00122-5](https://doi.org/10.1016/0020-7519(94)00122-5)
 17. Yilmaz R, Özyıldız Z, Yumuşak N. Pathomorphological findings of *Coenurus cerebralis* in sheep. *Harran Üniv Vet Fak Derg.* 2014;3:73-7.
 18. Yener Z, Uyar A, Yaman T, Keleş Ö. Veteriner özel patoloji. Ankara: Matus Basım; 2016.
 19. Jithendran KP, Bhat TK. Prevalence of dicrocoeliosis in sheep and goats in Himachal Pradesh, India. *Vet Parasitol.* 1996;61:265-71. [https://doi.org/10.1016/0304-4017\(95\)00834-9](https://doi.org/10.1016/0304-4017(95)00834-9)
 20. Dinnik JA, Dinnik NN. Effect of the seasonal variations of temperature on the development of *Fasciola gigantica* in the snail host in the Kenya highlands. *Bull Epizoot Dis Afr.* 1963;11:197-207.
 21. Teuscher E. A new single method of examining faeces for the diagnosis of helminth diseases of ruminants. *Zentralbl Veterinärmed B.* 1965;12:241-9. <https://doi.org/10.1111/j.1439-0450.1965.tb01388.x>
 22. Soulsby EJJ. Helminths, arthropods and protozoa of domesticated animals. Philadelphia: Lea & Febiger; 1982.
 23. Lekimme M, Mignon B, Leclipteux T, Tombeux S, Mareéchal F, Losson B. In vitro tests for evaluation of the hatchability of the eggs of Psoroptes mites following exposure to acaricidal compounds. *Med Vet Entomol.* 2006;20:102-5. <https://doi.org/10.1111/j.1365-2915.2006.00597.x>
 24. Yamaguti S. Synopsis of digenetic trematodes of vertebrates. Vols I and II. Tokyo: Keigaku; 1971.
 25. Otranto D, Rehbein S, Weigl S, Cantacessi C, Parisi A, Lia RP, et al. Morphological and molecular differentiation between *Dicrocoelium dendriticum* (Rudolphi, 1819) and *Dicrocoelium chinensis* (Sudarikov and Ryjikov, 1951) Tang and Tang, 1978 (Platyhelminthes: Digenea). *Acta Trop.* 2007;104:91-8. <https://doi.org/10.1016/j.actatropica.2007.07.008>
 26. Scala A, Tamponi C, Dessi G, Sedda G, Sanna G, Carta S, et al. Dicrocoeliosis in extensive sheep farms: a survey. *Parasit Vectors.* 2019;12:342. <https://doi.org/10.1186/s13071-019-3609-2>
 27. Chougar L, Harhoura K, Aissi M. First isolation of *Dicrocoelium dendriticum* among cattle in some Northern Algerian slaughterhouses. *Vet World.* 2019;12:1039-45. <https://doi.org/10.14202/vetworld.2019.1039-1045>
 28. Bradbury P, Gordon K. Connective tissue and stains. In: Bancroft JD, Stevens A editors. *Theory and practice of histological techniques.* 3rd ed. Edinburgh: Churchill Livingstone; 1990. p.119-42.
 29. Ansari-Lari M, Moazzeni M. A retrospective survey of liver fluke disease in livestock based on

- abattoir data in Shiraz, south of Iran. *Prev Vet Med.* 2006;73:93-6. <https://doi.org/10.1016/j.prevetmed.2005.08.023>
30. Gawish NI, Bayoumi B, Haridy FM. Studies on the incidence and pathogenesis of *Dicrocoelium dendriticum* in slaughtered sheep in Riyadh abattoir, Saudi Arabia. *J Egypt Soc Parasitol.* 1993;23:263-7.
 31. Maraqa A, Amr ZS, Rifai L, Al-melhim W. An abattoir survey of liver and lung helminthic infections in local and imported sheep in Jordan. *Turk J Vet Anim Sci.* 2005;29:1-2.
 32. Marcos LA, Yi P, Machicado A, Andrade R, Samalvides F, Sánchez J, et al. Hepatic fibrosis and *Fasciola hepatica* infection in cattle. *J Helminthol.* 2007;81:381-6. <https://doi.org/10.1017/S0022149X07850231>
 33. Bihaqi SJ, Allaie IM, Banday MAA, Wani ZA, Shahardar RA. Prevalence of caprine GI helminths in temperate areas of Jammu & Kashmir. *J Parasit Dis.* 2017;41:843-9. <https://doi.org/10.1007/s12639-017-0900-z>
 34. Wolff K, Hauser B, Wild P. *Dicrocoeliose des schafes: untersuchungen zur pathogenese und zur regeneration der leber nach therapie.* *Berl Münch Tierärztl Wochenschr.* 1984;97:378-87.
 35. Samadie H, Mohammadi G, Heidarpour M, Azizzadeh M, Maleki M, Borji H. Parasitic burdens, egg output, hemathologic, and biochemical changes in naturally infected lambs with *Dicrocoelium dendriticum*. *Iran J Parasitol.* 2016;11:358-63.
 36. Alpini G, Glaser SS, Ueno Y, Pham L, Podila PV, Caligiuri A, et al. Heterogeneity of the proliferative capacity of rat cholangiocytes after bile duct ligation. *Am J Physiol Gastrointest Liver Physiol.* 1998;274:G767-75. <https://doi.org/10.1152/ajpgi.1998.274.4.G767>
 37. Sato K, Meng F, Giang T, Glaser S, Alpini G. Mechanisms of cholangiocyte responses to injury. *Biochim Biophys Acta Mol Basis Dis.* 2018;1864:1262-9. <https://doi.org/10.1016/j.bbadis.2017.06.017>
 38. Sato K, Marzioni M, Meng F, Francis H, Glaser S, Alpini G. Ductular reaction in liver diseases: pathological mechanisms and translational significances. *Hepatology.* 2019;69:420-30. <https://doi.org/10.1002/hep.30150>
 39. Braga TT, Agudelo JSH, Camara NOS. Macrophages during the fibrotic process: M2 as friend and foe. *Front Immunol.* 2015;6:602. <https://doi.org/10.3389/fimmu.2015.00602>
 40. Rahko T. Studies on the pathology of dicrocoeliasis and fascioliasis in the goat I. The histopathology of the liver and bile ducts. *Acta Vet Scand.* 1972;13:554-62. <https://doi.org/10.1186/BF03547160>
 41. Coutteau P, Camara MR, Sorgeloos P. The effect of different levels and sources of dietary phosphatidylcholine on the growth, survival, stress resistance, and fatty acid composition of postlarval *Penaeus vannamei*. *Aquaculture.* 1996;147:261-73. [https://doi.org/10.1016/S0044-8486\(96\)01387-7](https://doi.org/10.1016/S0044-8486(96)01387-7)
 42. Martínez-Fernández AR, Nogal-Ruiz JJ, López-Abán J, Ramajo V, Oleaga A, Manga-González Y, et al. Vaccination of mice and sheep with Fh12 FABP from *Fasciola hepatica* using the new adjuvant/immunomodulator system ADAD. *Vet Parasitol.* 2004;126:287-98. <https://doi.org/10.1016/j.vetpar.2004.07.023>
 43. Piegari G, Pepe P, De Biase D, d'Aquino I, Bosco A, Cringoli G, et al. Immunopathological response, histological changes, parasitic burden, and egg output in sheep naturally infected by *dicrocoelium dendriticum*. *Animals.* 2021;11:546. <https://doi.org/10.3390/ani11020546>
 44. Cullen JM, Stalker MJ. Liver and biliary system. In: Grant Maxie M, editor. *Jubb, Kennedy & Palmer's pathology of domestic animals.* 6th ed. Elsevier: St. Louis, MO; 2016. p.258-352.e1.
 45. Maizels RM, McSorley HJ. Regulation of the host immune system by helminth parasites. *J Allergy Clin Immunol.* 2016;138:666-75. <https://doi.org/10.1016/j.jaci.2016.07.007>